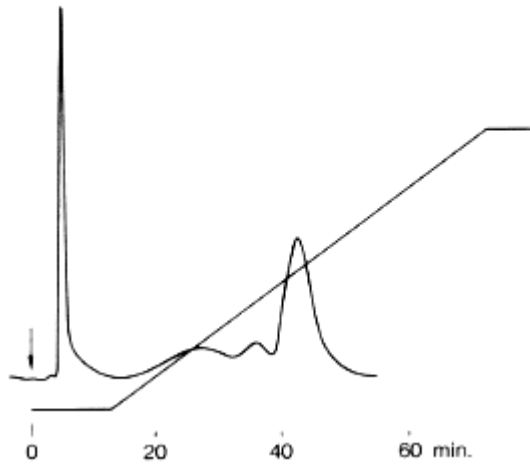


Ligand: Concanavalin A      Sample: Ovalbumin



Column : Shodex AFpak ACA-894 (8.0mmID\*50mm)  
Eluent : (A); 0.02M Tris-HCl(pH7.4) + 0.5M NaCl  
(B); (A) + 0.05M alpha-Methyl-D(+)-glucoside  
Linear gradient: (A) to (B) for 60min  
Flow rate : 0.3mL/min  
Detector : UV(280nm)  
Column temp. : Room temp.